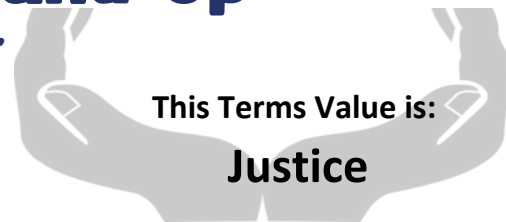


Wenlock's Weekly Round-Up

'With God's love, we are lights for the world.'



KEY DATES

- **Monday 31st March to Wednesday 2nd April** - Year 6 residential trip - CYE
- **Tuesday 1st April** - Easter church service - 10am start. Year 4 parents are warmly invited to attend - St Mary's Church, Church Street, Luton LU1 3JF
- **Wednesday 2nd April** - Believe and Achieve awards, Y3 and Y4, 9.15 - 10.15am - invited families only
- **Thursday 3rd April** - Believe and Achieve awards, Y5 and Y6, 9.15 - 10.15am - invited families only

- **Monday 7th April to Tuesday 22nd April** - Easter holidays - school closed

- **Wednesday 23rd April** - Children return to school

CHANGES TO COLLECTION PROCEDURES AFTER THE EASTER HOLIDAYS

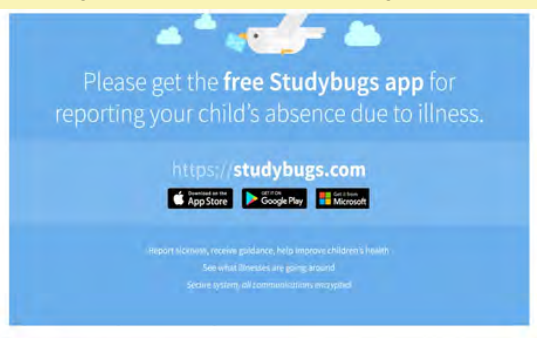
After the **Easter holidays** we will implement changes to make our hometime systems more secure.

Years 3 and 4 will be dismissed at 3.30pm as usual. Children in Y3 and 4 must still be collected by a responsible adult, with older children being given permission to collect on Arbor.

Years 5 and 6 will be dismissed at 3.20pm. Children with Arbor permission will be allowed to walk home at this time, and those without will need to be collected at this new time. If your child attends after-school club, you will not be charged for this additional 10 minutes.

STUDYBUGS

- To date, only 54% of Wenlock Parents have signed up to Studybugs. By Easter we would like the take up to be 75%.
- Please download the free Study Bugs app if you have not already done so.



ATTENDANCE

Well done to Stellar who achieved the highest attendance for the last week at 98.28%

The attendance for the whole school was 96.23%

Our School target is 97%





We are a Nut Free school for the safety of our children with nut allergies We would like to remind parents that most chocolate spread contains hazelnuts. Please can you remember to not put chocolate spread in the children's lunch boxes.

Electrical Recycling



We have an electrical recycling collection bin in the reception area of the school. Please see the poster below regarding which items can be recycled.

Uniform Exchange



Level Trust are always grateful for donations of pre-loved school uniform. There is a blue container in our school reception area which has details of uniform requested where items can be placed.
Thank-you!

Road Safety



To keep children safe, please ensure that children are taught how to cross the road safely, especially outside school and where there is heavy traffic.
A reminder that drivers must not stop on the yellow lines outside of the school.

Snacks



Many thanks for sending your children in with fruit and vegetables for snack times and for remembering not to send your children in with nut related products.
Grapes and cherry tomatoes should be sent cut into quarters length-ways to avoid choking.

Don't forget to check our our facebook and X accounts for all the latest information from Team Wenlock!



PARENT INFORMATION

PE TIMETABLE

Year group	PE Day	PE Day
Year 3 - Alpha	Tuesday	Friday
Year 3 - Omega	Tuesday	Friday
Year 3 - Genesis	Tuesday	Friday
Year 4 - Aurora	Wednesday	Thursday
Year 4 - Alina	Wednesday	Thursday
Year 4 - Vesper	Wednesday	Thursday
Year 5 - Lunar	Wednesday	Thursday
Year 5 - Solar	Wednesday	Thursday
Year 5 - Stellar	Wednesday	Thursday
Year 6 - Aviary	Tuesday	Friday
Year 6 - Arboreal	Tuesday	Friday
Year 6 - Aquarium	Tuesday	Friday

HOMEWORK GRIDS

Year 3, 4 and 5 homework grids for Spring term are live on the website and they can be found under Home Learning section. Year 6 homework has been sent home this week. This is due back to their class teacher on Tuesday.

PEARSON
NATIONAL
TEACHING
AWARDS

We are delighted to share the news that our amazing Miss Anderson has been nominated and shortlisted for the Pearson National Teaching Award. What an amazing achievement to her and our school!



Dinner Money

Please top up dinner money payments in advance of your child having school dinner.

The cost of school dinners is as follows:
£2.75 per day or £13.75 per week.

If you have a query relating to dinner money payment, you can contact the finance team on:

schooldinner@wenlockacademy.co.uk

TWICE A YEAR, EVERY YEAR, FOR 15 YEARS!

1EID LUTON FESTIVAL WARDOWN PARK 2025

NEW BEDFORD ROAD

EID DAY + NEXT DAY

30TH OR 31ST MARCH - 1ST APRIL

REGISTER: WWW.1EID.NET

EID PRAYER ONLY @ STOCKWOOD PARK

10AM JAMAT - Men and Women Welcome

**3PM & 7PM
EID PARTY TIME WITH**



P

**ALL DAY PARKING
ON
POPES MEADOW**

EID FESTIVAL 1 PM - 9 PM

SHEEDS & QURAN COMPETITIONS FROM 4PM

EID DAY FIREWORKS

POPES MEADOW 9:30 PM

NEXT DAY: FESTIVAL 1PM - 9PM



**OVER 30 Funfair Rides & Attractions • Petting Zoo • Circus Acts •
BBQ Food • Desserts • Fire Jugglers • Competitions •
Amazing Prize Giveaways • Eid Fireworks Finale!**

WE ARE 100% VOLUNTARY MANAGED ORG- SUPPORT OUR CHARITY (CHARITY NO.1144566)

TO SPONSOR, BOOK A STALL OR VOLUNTEER CONTACT US:

LUTON@1EID.NET  **07958 183 184 OR VISIT WWW.1EID.NET**

Special thanks to



Fitrah Family & counselling services



Working in Collaboration with



**DONATE
VOLUNTEER
SUPPORT
@1EIDUK**





Right to Choose: ASD and ADHD Assessment Pathways

What is Right to Choose?

In England, under the NHS, you now have a legal right to choose your mental healthcare provider, including for Autism Spectrum Disorder (ASD) and Attention Deficit Hyperactivity Disorder (ADHD) assessments. This service, offered through the NHS, is free of charge.

Introduction to Right to Choose Referrals

Did you know that NHS patients have the legal right to select their mental healthcare provider? This important right allows you to explore alternative providers if the waiting time for an ADHD or ASD assessment is too long. Right to Choose, introduced in 2018, is still a relatively new system, and many patients may not be aware of these options.

Who Can Offer Right to Choose Assessments?

Several clinics across the UK offer Right to Choose ADHD and/or ASD assessments. To be eligible to provide this service, clinics must also offer the same service to the NHS in England. Private-only clinics are not eligible. Checking a provider's website is a good way to determine if they offer the services you need.

For further information please go to:

[NHS Right to Choose](#)

Access to
dental
services

Oral
health
advice

Activities
for
children

FREE Dental pop-up clinic for under 10s

If your child is
in pain, please
call 111 for
advice, and do
not attend

Thursday 17 April

9am to 12.30pm and 1pm to 4.30pm

Park Town Family Hub, LU1 3DU

Free
tooth brush
& paste
for all

Fluoride
available



Luton

LEVEL TRUST
UNIFORM
EXCHANGE

LEVEL TRUST NEEDS YOU

WITH ALMOST 50% OF LUTON CHILDREN LIVING IN POVERTY, LEVEL TRUST NEEDS YOU MORE THAN EVER.

WE ARE TRYING TO RAISE £20,000 TO HELP CHILDREN LIVING IN POVERTY IN LUTON.

CURRENTLY, ALL DONATIONS ARE BEING MATCHED BY AVIVA PLC, SO FOR EVERY £1 THAT IS DONATED - AVIVA PLC WILL MATCH IT - DOUBLING THE DONATION!

THIS IS AN INCREDIBLE OPPORTUNITY TO RAISE MUCH NEEDED FUNDS FOR LEVEL TRUST BUT TIME IS RUNNING OUT!

THIS OFFER ENDS ON 26TH MARCH 2025 SO WE NEED YOUR HELP NOW!

PLEASE DONATE - ALL DONATIONS WILL MAKE A DIFFERENCE.

NO MATTER HOW BIG OR SMALL.

VISIT OUR WEBSITE WWW.LEVELTRUST.ORG OR SCAN THE QR CODE



What Parents & Educators Need to Know about BLUESKY SOCIAL APP

AGE RESTRICTION
13+
With an App Store rating of 17+ & Google Play rating Mature

While Bluesky has been around since 2019, it's suddenly taken off in a big way thanks to a significant exodus from X (formerly Twitter). Indeed, it looks and behaves a lot like Twitter before Elon Musk bought the platform. Bluesky has been touted in recent months as a safer, more open-minded alternative to X – but like any social media site, it still has its share of risks.

WHAT ARE THE RISKS?

NO PRIVATE ACCOUNTS

While most social networks allow accounts to be private, at the time of writing, all Bluesky accounts must be public. The development team has indicated this might change in the future, but the app is built on a public-first protocol. If private accounts are ever introduced, it may only be in a limited way – such as through the implementation of group chats.

INTERACTIONS WITH STRANGERS

Every account being public means that anyone can be contacted by anyone else. While users don't have to respond and can easily block people and move on, it does mean that youngsters are at particular risk of being conned by scammers, messaged by predatory adults or exposed to others with ill intentions. These hazards can be compounded by the fact that Bluesky doesn't require its users to provide their real name.

TROLLING AND BULLYING

While Bluesky currently feels a lot friendlier than X seems to have become, its lack of private accounts means that there's nothing to stop users from trolling and cyberbullying younger people. While accounts can be blocked and reported, a persistent bully could simply create a new profile, potentially making their victims feel unsafe in continuing to use the app.

DANGEROUS MISINFORMATION

Established news organisations have fact-checking and editing processes, but social networks have no such controls and can often serve as breeding grounds for misinformation and disinformation. Bluesky will possibly be no different once it reaches a certain size, and children may not have the critical thinking skills to tell fact from fiction – or to discern an informative, honest user from a malicious one.

ADULT TARGET AUDIENCE

Bluesky isn't designed with children in mind, and there aren't many parental controls on the platform. In an interview with the BBC, Bluesky's CEO originally said that the app would only allow users aged 18 and above to sign up, but a spokesperson later clarified its age restriction as 13+. This could imply the app was originally meant for an adult audience and suggests that making the platform more child-friendly might not currently be a priority.

RAPID GROWTH

At the time of writing, Bluesky seems calm in comparison with other social networks where moderation is lax and the atmosphere toxic – but that's due at least in part to its smaller community. The app has recently been adding as many as a million users per day, and if that continues, there'll be more unpleasant users to handle, and moderators could struggle to maintain the pleasant environment Bluesky is currently known for.

Advice for Parents & Educators

USE THE ADULT CONTENT FILTER

Bluesky doesn't have much in the way of parental controls, but there are content filters which can hide sexual and graphic imagery. These are enabled by default for underage accounts but can be manually turned on in the 'Moderation' section of the app's settings. The 'advanced' Bluesky Moderation Service lets you restrict content even further, hiding – for example – self-harm content, extremist rhetoric, and even rude posts.

ENCOURAGE BLOCKING AND REPORTING

Another tool that Bluesky uses to ensure a decent experience is muting and blocking accounts. The former prevents you from seeing a specific user's content, while the latter stops them from seeing yours. If a child is encountering trolls or bullies on the platform, encourage them to use this function, while also reporting the offenders to help make the platform a nicer place for everyone.

LOOK OUT FOR FAKES

Impersonation is a problem on all social networks. While the consequences are usually benign, imposters sometimes attempt to scam or groom children by pretending to be a popular influencer or online personality. Bluesky is unique in that it can be connected to official domains, with users' handles linking to other sites; while this isn't widely used right now, it could be a reliable way to verify celebrities and public figures in future.

KEEP AN OPEN DIALOGUE

As with all social media platforms, moderation and content filters can only do so much; it's highly likely that a child will eventually face something unsavoury. For that reason, it's important to make sure that young people are aware of the risks and know how to handle the technology if anything they see on the app makes them feel unsafe or uncomfortable.

Meet Our Expert

Alan Martin is an experienced technology journalist who has written for the likes of Wired, TechRadar, Tom's Guide, The Evening Standard, The Guardian and The New Statesman.



The National College

Source: See full reference list on guide page at: <https://nationalcollege.com/guides/bluesky-app>

FOOD
FESTIVAL
By Aspens

DELICIOUS DESSERTS

3rd April

Chicken Fajita Fiesta
Or

Mac & Cheese Please
with a Side of Peas

And

Apple Scrapple Sponge

Jelly Jive

Brookie-O Cookie

HUMANS OF
LUTON

Don't bin them, recycle your old electricals

Anything with a plug, battery
or cable can be recycled and
turned into something new.

Bag up your electricals and
bring them to your school.
The school with the most
electricals collected will
have a chance to win a
cash prize!

Scan or search 'Recycle Your Electricals'
to find your local recycling points.



Together with

Luton



JUSTICE

HOME SCHOOL VALUES

This term we will be focussing in school on the value JUSTICE. We hope your family will find these ideas helpful as you explore the value and have fun together.

TALK TOGETHER about Justice

Justice means more than making things 'fair'. In order for people to live together well in a just community it is important to have rules or laws that everybody sticks to. Imagine if there were no rules for people driving cars on the road!

As a family you may want to talk about:

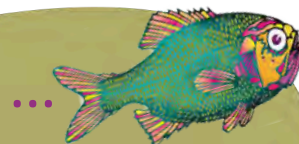
- why it is important to have rules and laws
- rules or laws that you don't think are **just** (or fair)
- family rules that you think are important

THINK TOGETHER Words of Wisdom

"Injustice anywhere is a threat to justice everywhere."
Martin Luther King Jr



READ TOGETHER The Story of Jonah



Some folk always seem to be arguing or moaning and groaning. Sometimes they moan about the weather, sometimes they moan about their family, and sometimes they just moan. In fact, they are so busy moaning about EVERYTHING that they forget to be thankful for ANYTHING.

Jonah was just like that! He moaned all the time. So when God asked him to go to Ninevah and tell the people there that he was angry about their stealing, lying, fighting and their wicked ways, of course Jonah moaned and groaned. "Not Ninevah, please! Anywhere but Ninevah! We have never got on with that nasty bunch. Please Lord, send someone else." And just in case God asked him again Jonah, quick as his legs could carry him, ran to the dock and asked the captain of the nearest boat to take him to the furthest place from Ninevah. The nearest boat was the Jolly Dragon and her captain was called Wise Captain Silas. The Jolly Dragon set sail on a calm sea under a clear blue sky but within a day found herself caught up in a fierce and frightening storm. Captain Silas knew immediately that something was not right. He went to find his passenger, who, surprise, surprise, was below deck moaning to one of the sailors. "It's my fault," groaned Jonah. "Throw me into the sea and the storm will blow over." Wise Captain Silas knew Jonah was right and so to save his ship and all the crew, gave orders to toss Jonah overboard that minute. A huge fish saw Jonah sinking slowly to the bottom of the sea, and he opened his great mouth wide, and swallowed him whole!

Jonah had only just enough time to recover from the shock when he found himself shooting through the air and onto a beach very near to Ninevah. The great fish had spat him out and swum away.

Even Jonah knew now that there was no way out. He picked himself up, shook

off the seaweed and walked slowly into the centre of the city. There he did what God had told him at the start and explained to the people of Ninevah that God was sad about their **injust** behaviour and how he wanted them to change their ways. To Jonah's amazement, that's exactly what they did.

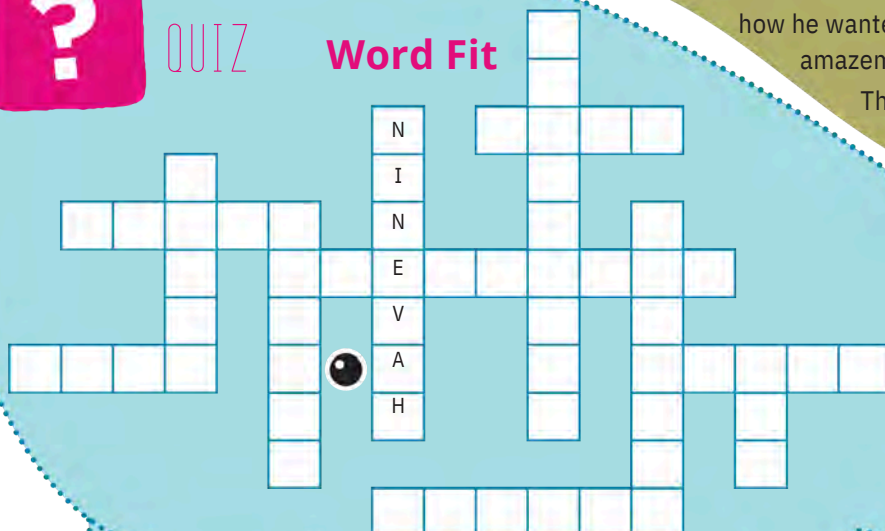
They fasted, they prayed for God's forgiveness and even thanked him for sending Jonah.

Bible story based on Book of Jonah



QUIZ

Word Fit



- ANGRY
- CALM
- FISH
- GROANED
- JONAH
- MOANER
- OVERBOARD
- PRAYED
- STORM
- SWALLOWED



Lady Justice

Lady Justice is one of the most famous landmarks in London. It is a bronze statue that stands on the domed roof of the Old Bailey. This building houses the central criminal courts where people who are accused of breaking the law are tried by a judge and jury to find out if they are 'guilty' and should be punished or 'not guilty' and can go free.



Lady Justice was designed to be a symbol of justice: in her left hand she carries the scales of truth and fairness and in her right hand a double edged sword representing the power of reason and justice.



New laws are passed every year by the government. Ask each member of the family to think of a law which they think the government should pass. Talk about your ideas and how your new law would make a difference.



FASCINATING FACTS

The World Village

If the world was a village, with 100 people living in it:

- 61 people would come from Asia, 13 from Africa, 13 from the Americas, 12 from Europe and 1 from Australasia
 - 26 of the people would be under 15 and just 8 of them over 64
 - half of the people would speak one of just 8 languages – and the most common language would be Chinese
 - 82 village people have access to safe drinking water
 - 17 people would not be able to read or write
 - 53 villagers would have less than £1.30 a day to live on
 - there would be 18 cars, 15 computers, 61 mobile phones
- Talk with your family about ...
- what you find surprising about these statistics
 - what we take for granted in our lives that many people live without
 - what you think is unjust
 - what you think could be done to make the world a more just place for everyone

* Taken from 2012 statistics inspired by © If the World Were a Village by David J. Smith, 1990.



HOME-SCHOOL CHALLENGE



Design a weighing machine

Before electronic weighing machines were invented, scales often had two pans that were balanced when each held an equal weight.

Design and make a simple balance from junk materials that can weigh small objects.

