

REFLECT AND TRANSLATE

CONTENT DOMAIN REFERENCES:

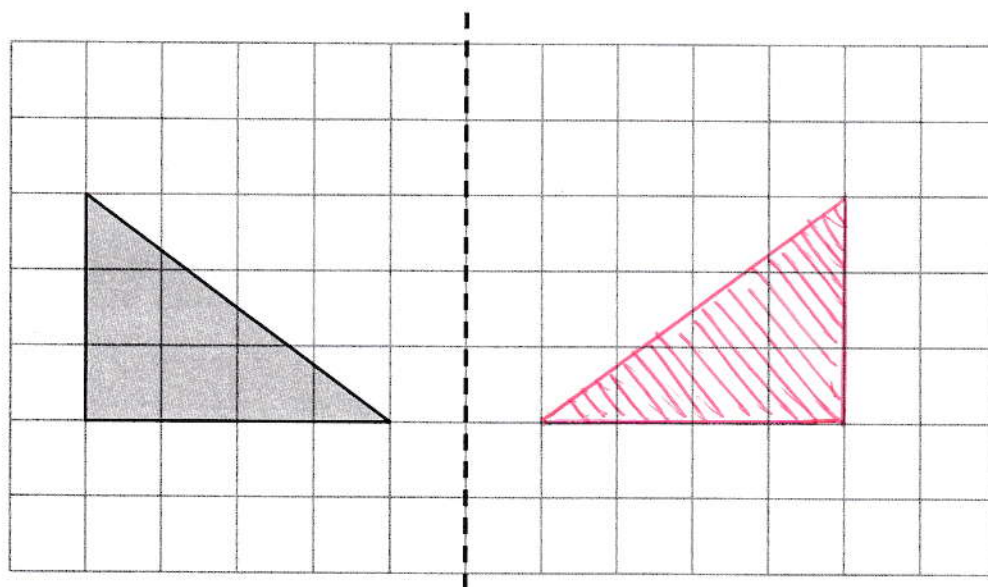
P2

KS2 SATS

PRACTICE QUESTIONS BY TOPIC

1 Draw the reflection of the shaded shape in the mirror line.

[Extra] Use a ruler.



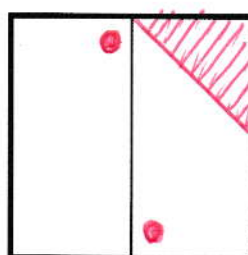
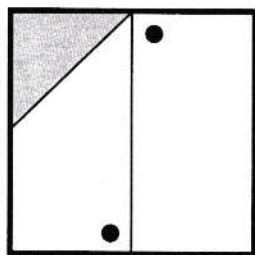
mirror line

[1 mark]

2 Here is a square with a design on it.

[2002] The square is reflected in the mirror line.

Draw the missing triangle and dots on the reflected square.



mirror line

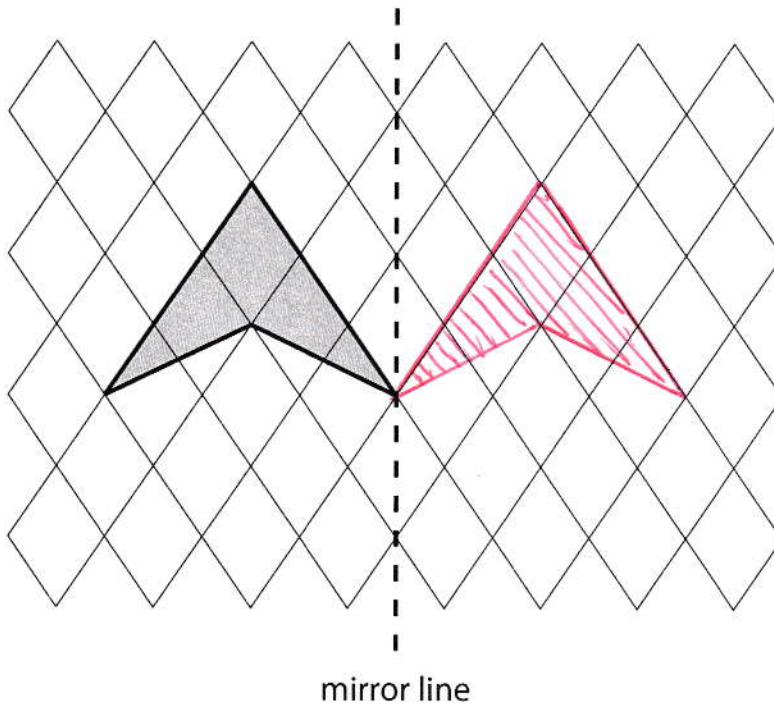
[1 mark]

3

Draw the reflection of the shaded shape in the mirror line.

[2007]

Use a ruler.



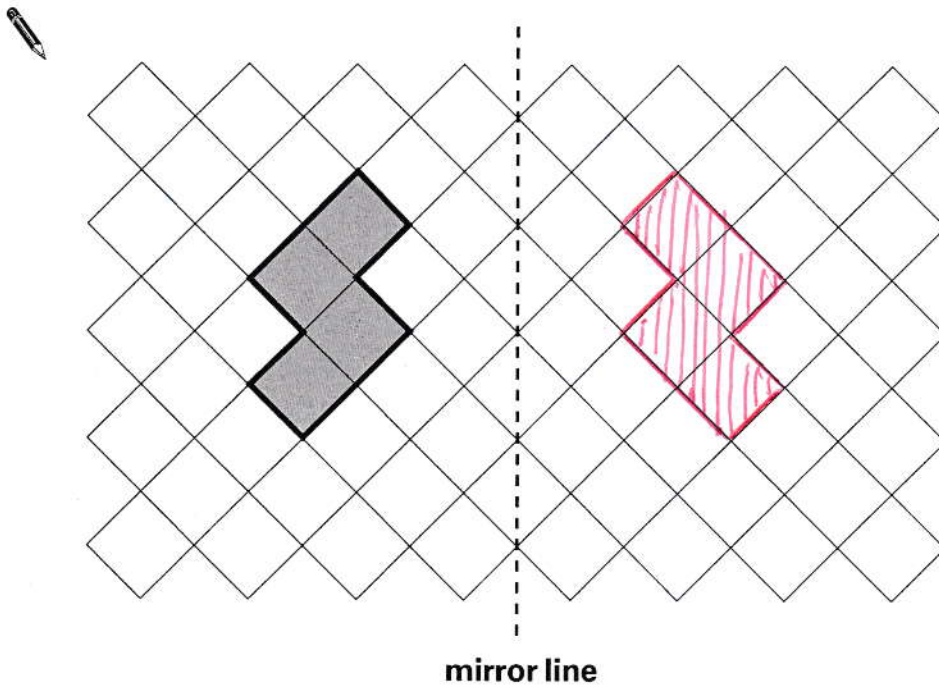
[1 mark]

4

Draw the **reflection** of the shaded shape in the mirror line.

[2001]

You may use a mirror or tracing paper.

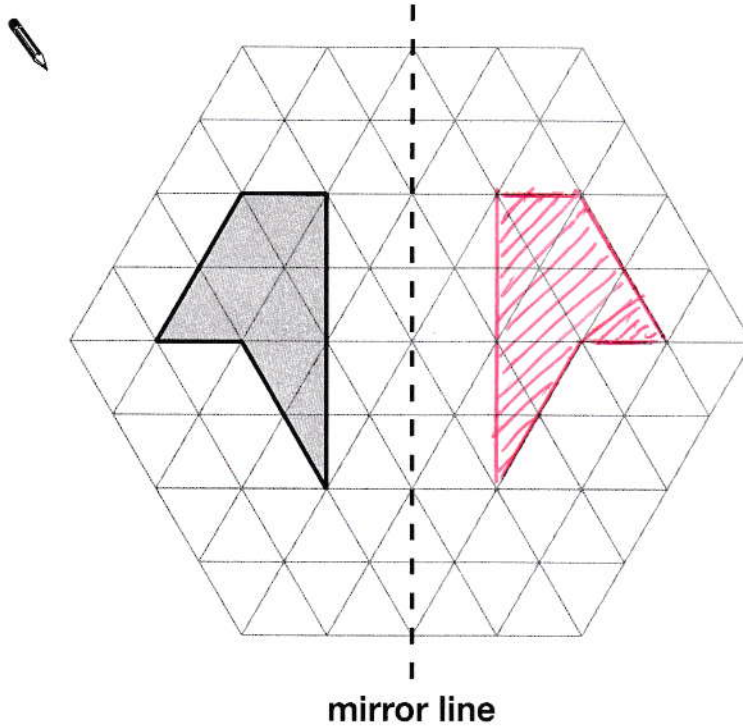


[1 mark]

5

Draw the reflection of the shaded shape in the mirror line.

[2010]



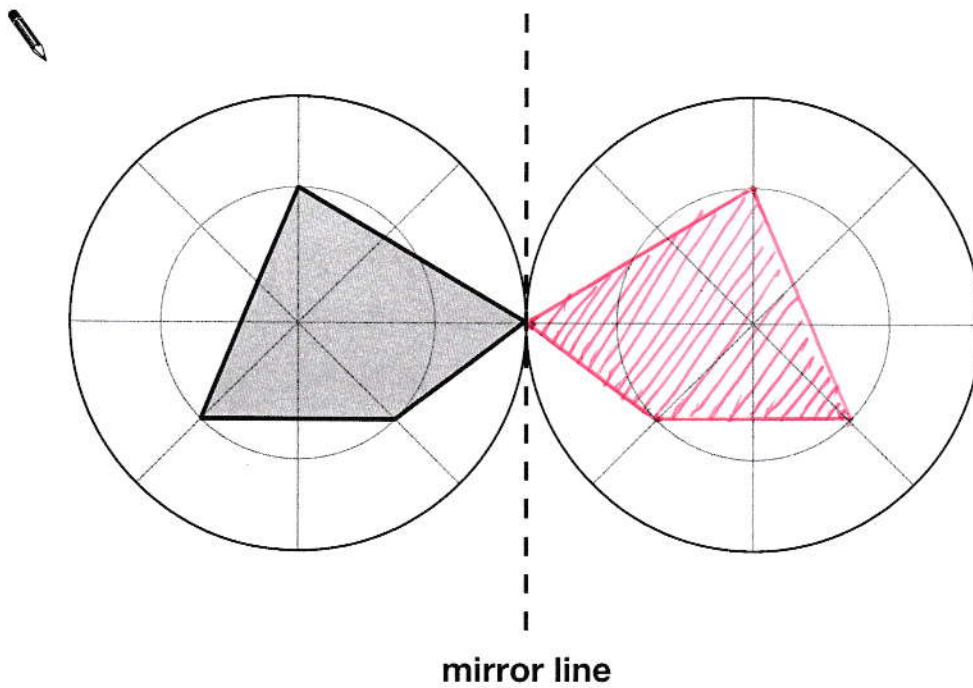
[1 mark]

6

Draw the reflection of the shaded shape in the mirror line.

[2008]

Use a ruler.

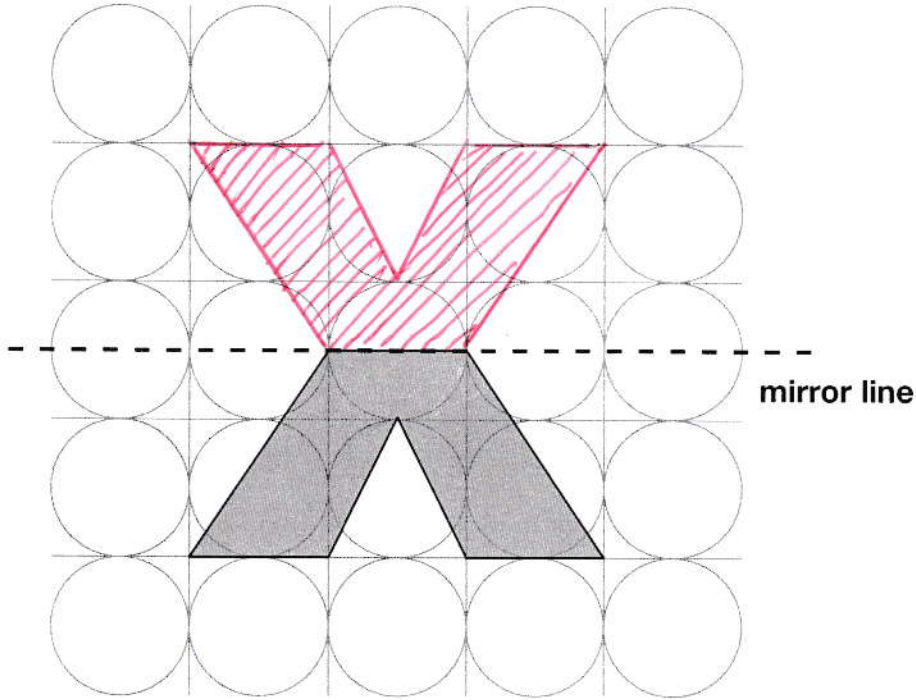


[1 mark]

7

Draw the reflection of the shaded shape in the mirror line.

[2009]



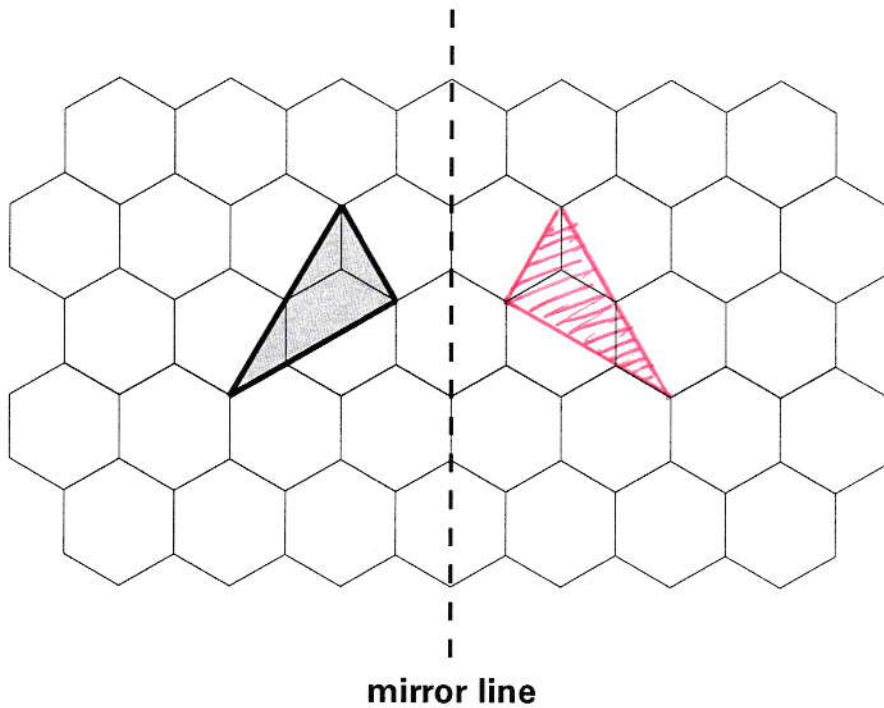
[1 mark]

8

This grid is made of hexagons.

[2005]

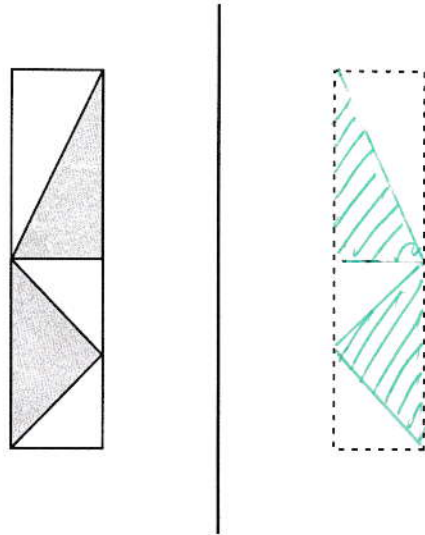
Draw the reflection of the shaded shape on the grid.



[1 mark]

Here is a design and a mirror line.

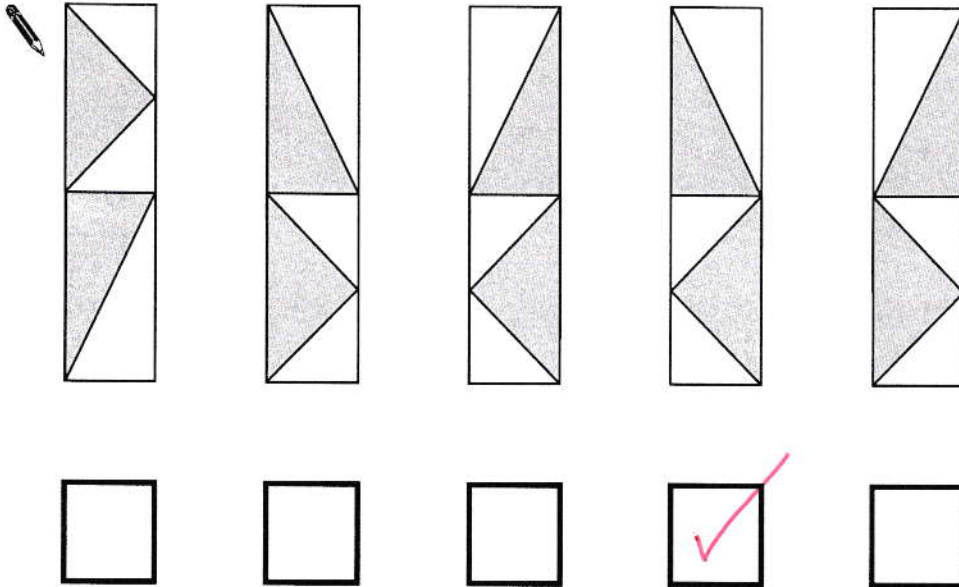
[2003]



mirror line

Which **one** of the designs below is the reflection of the design in the mirror line?

Tick (✓) the correct design.



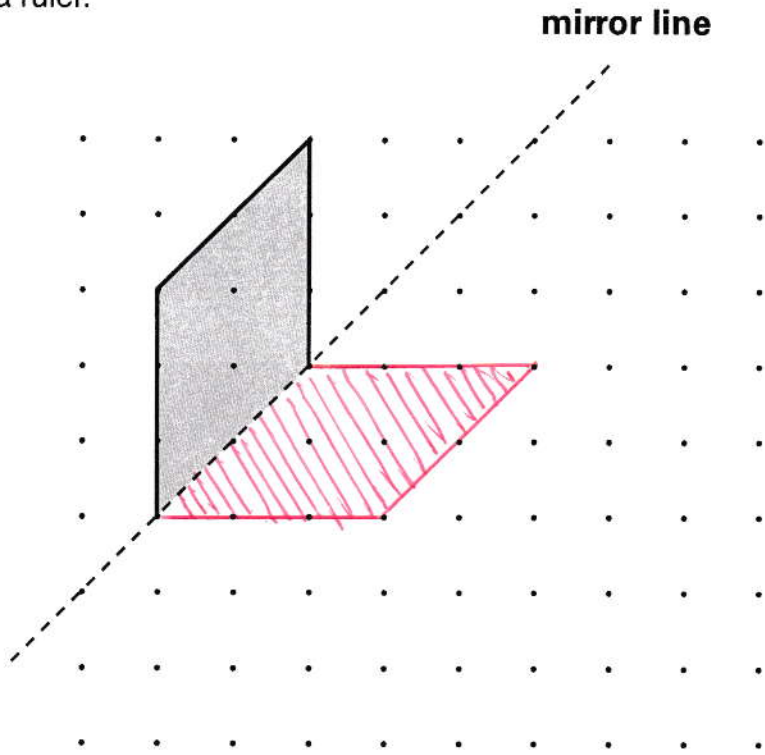
[1 mark]

10

Draw the **reflection** of the shape in the **mirror line**.

[Extra]

Use a ruler.



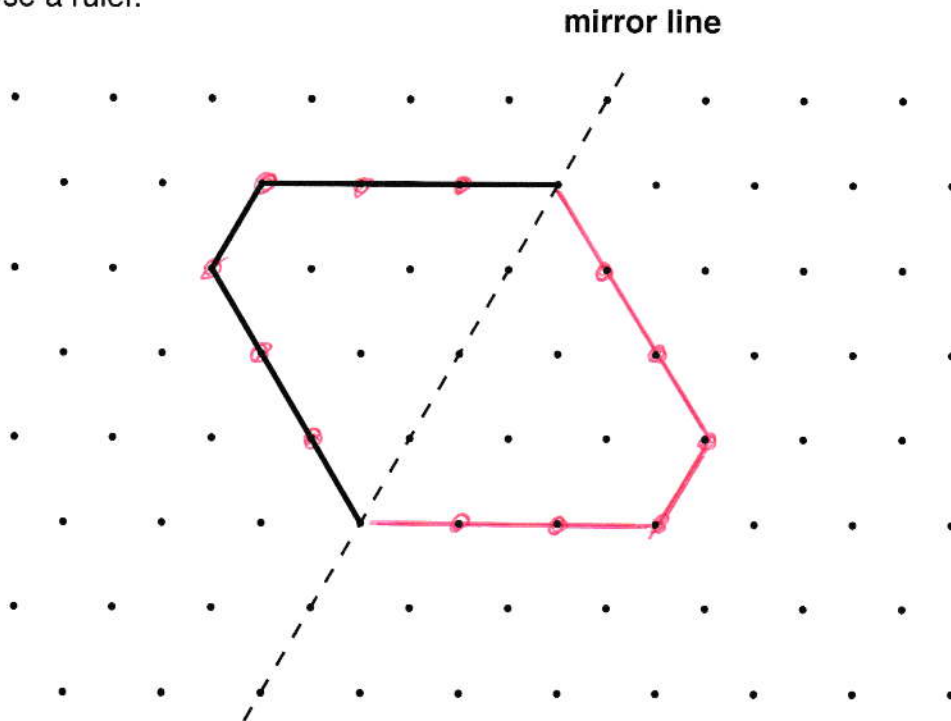
[1 mark]

11

Draw the **reflection** of the shape in the **mirror line**.

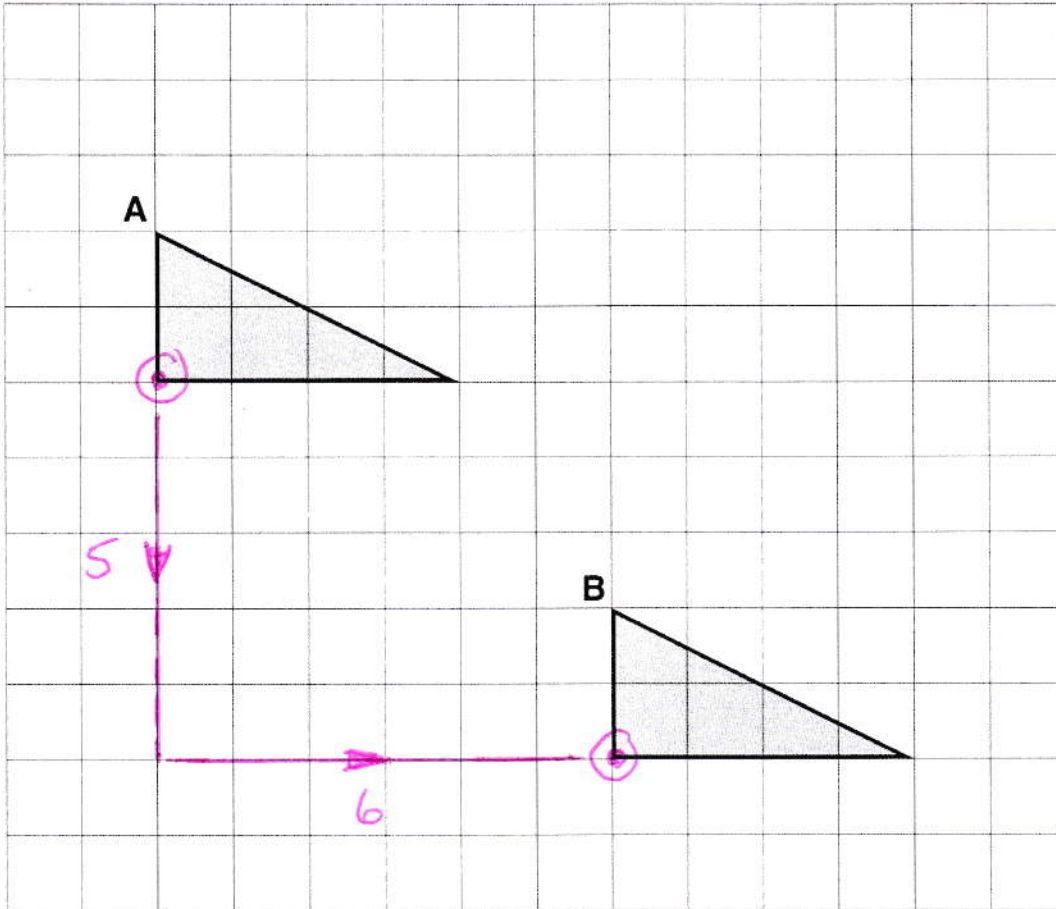
[2000]

Use a ruler.



[1 mark]

[2016]



Complete the sentence.

The triangle has moved squares to the right

and squares down.

[1 mark]

13

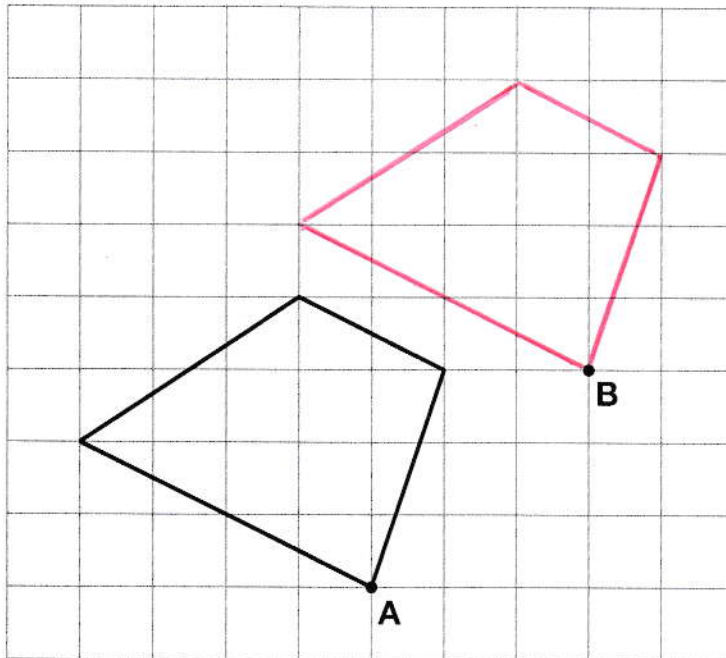
Here is a quadrilateral on a square grid.

[2010]

The quadrilateral is translated so that point **A** moves to point **B**.

Draw the quadrilateral in its new position.

Use a ruler.



[1 mark]

14

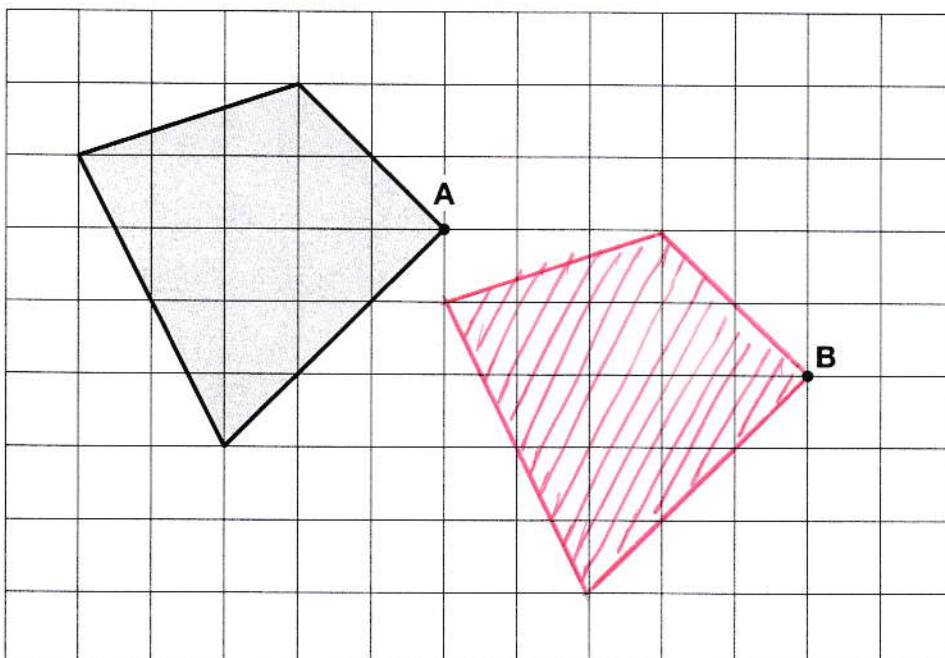
Here is a shape on a square grid.

[2016S]

The shape is translated so that point **A** moves to point **B**.

Draw the shape in its new position.

Use a ruler.

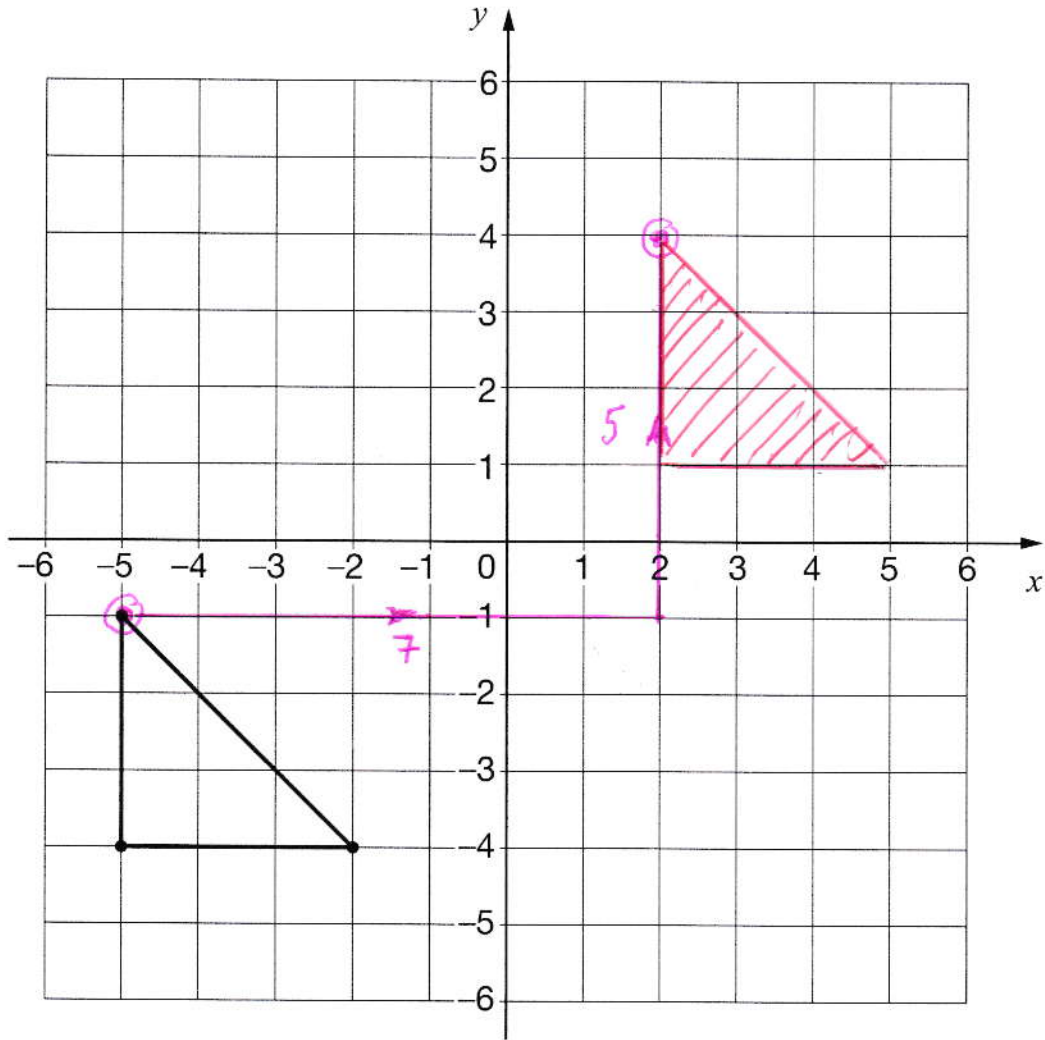


[1 mark]

15

Here is a triangle drawn on a coordinate grid.

[2017]



The triangle is translated **7 right** and **5 up**.

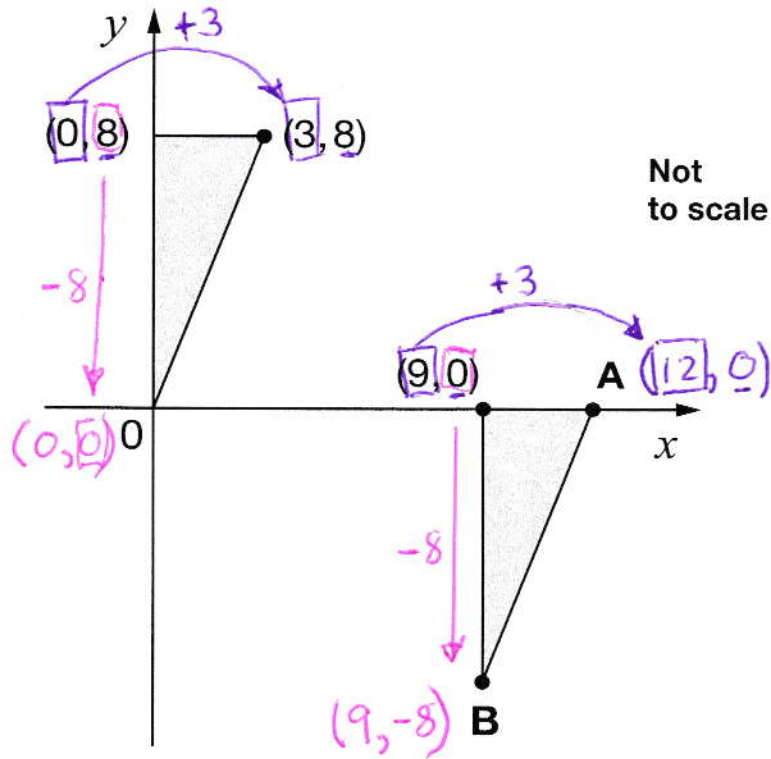
Draw the triangle in its new position.

[1 mark]

16

Here are two **identical** shaded triangles on coordinate axes.

[2016S]



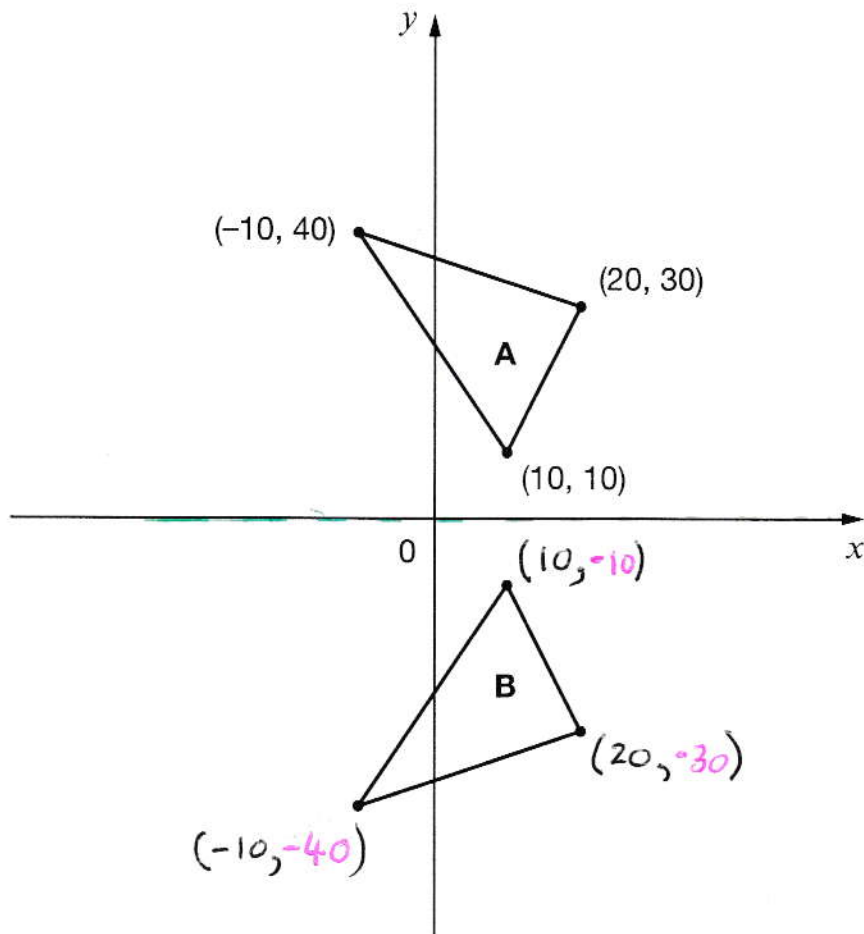
Write the coordinates of points A and B.

$$A = (12, 0)$$

$$B = (9, -8)$$

[2 marks]

[2016]



Triangle B is a reflection of triangle A in the x-axis.

Two of the new vertices of triangle B are $(10, -10)$ and $(20, -30)$.

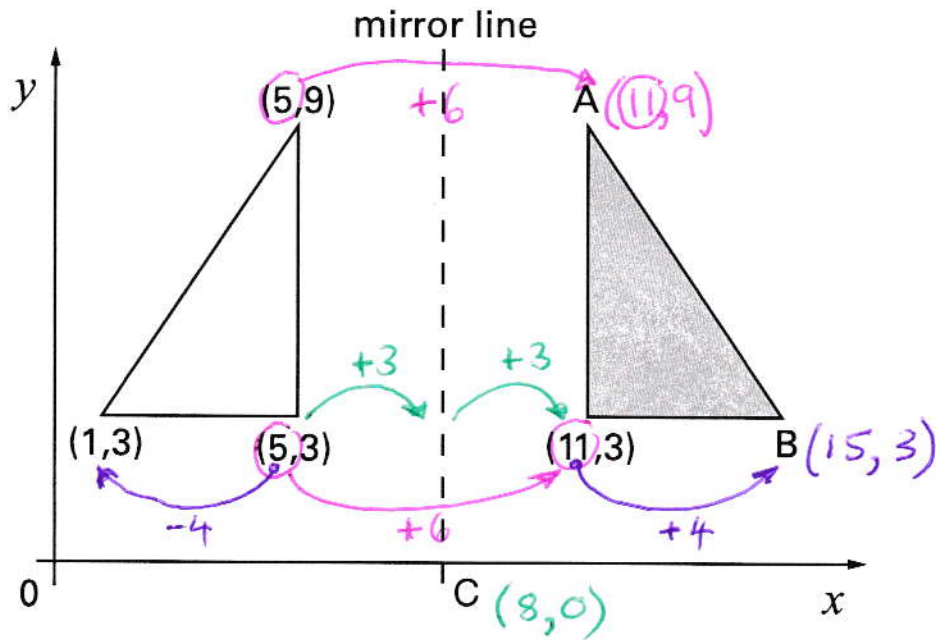
What are the coordinates of the **third** vertex of triangle B?

$(-10, -40)$

[1 mark]

The shaded triangle is a reflection of the white triangle in the mirror line.

[2000]



Write the coordinates of points A and B.

$$A = (11, 9)$$

$$B = (15, 3)$$

Point C is where the mirror line crosses the x-axis.

Write the coordinates of point C.

$$C = (8, 0)$$

[3 marks]