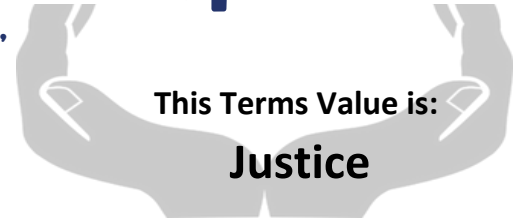


Wenlock's Weekly Round-Up

'With God's love, we are lights for the world.'



KEY DATES

- **Monday 24th March** - CYE Trip information for parents who could not attend on Thursday 20th March
- **Tuesday 25th March** - Year 6 children to attend Chiltern Academy, Spring Musical - Frozen
- **Wednesday 26th March to Friday 28th March** - Year 5 residential trip - PGL
- **Friday 28th March** - Easter Disco (see poster for further details) book via Arbor
- **Friday 28th March** - Y3 and Y4 PE Enrichment Day, please remember to send children into school wearing their PE kits
- **Monday 31st March to Wednesday 2nd April** - Year 6 residential trip - CYE
- **Tuesday 1st April** - Easter church service - 10am start. Year 4 parents are warmly invited to attend - St Mary's Church, Church Street, Luton LU1 3JF
- **Wednesday 2nd April** - Believe and Achieve awards, Y3 and Y4, 9.15 - 10.15am - invited families only
- **Thursday 3rd April** - Believe and Achieve awards, Y5 and Y6, 9.15 - 10.15am - invited families only
- **Monday 7th April to Tuesday 22nd April** - Easter holidays - school closed
- **Wednesday 23rd April** - Children return to school

IMPORTANT UPDATE

Dear Families,

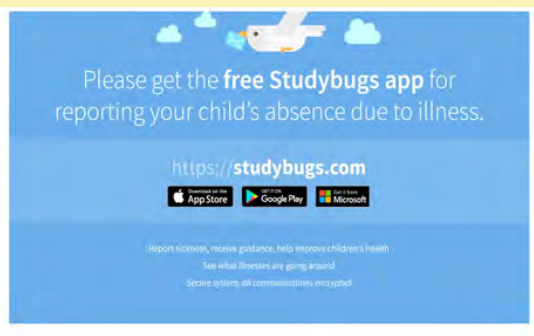
Earlier this term, our Trust Estates Officer reviewed our site security and made a number of recommendations.

First, we have installed a security intercom on the foyer doors. Please press the buzzer, and an Admin team member will ask who you are visiting and then let you in. The breakfast and after-school club doorbell is now on the side of the Serenity Room building by the double doors. This will be your new entrance.

The next big change will take effect after the **Easter holidays** and will impact years 5 and 6. To make our hometime systems more secure, we will be staggering hometime. **Years 3 and 4 will be dismissed at 3.30pm as usual.** Children in Y3 and 4 must still be collected by a responsible adult, with older children being given permission to collect on Arbor. **Years 5 and 6 will be dismissed at 3.20pm.** Children with Arbor permission will be allowed to walk home at this time, and those without will need to be collected at this new time. If your child attends after-school club, you will not be charged for this additional 10 minutes.

STUDYBUGS

- To date, only 54% of Wenlock Parents have signed up to Studybugs. By Easter we would like the take up to be 75%.
- Please download the free Study Bugs app if you have not already done so.



ATTENDANCE

Well done to Omega who achieved the highest attendance for the last week at 99.58%

The attendance for the whole school was 95.99%

Our School target is 97%





We are a Nut Free school for the safety of our children with nut allergies We would like to remind parents that most chocolate spread contains hazelnuts. Please can you remember to not put chocolate spread in the children's lunch boxes.

Electrical Recycling



We have an electrical recycling collection bin in the reception area of the school. Please see the poster below regarding which items can be recycled.

Uniform Exchange



Level Trust are always grateful for donations of pre-loved school uniform. There is a blue container in our school reception area which has details of uniform requested where items can be placed.
Thank-you!

Road Safety



To keep children safe, please ensure that children are taught how to cross the road safely, especially outside school and where there is heavy traffic.
A reminder that drivers must not stop on the yellow lines outside of the school.

Snacks



Many thanks for sending your children in with fruit and vegetables for snack times and for remembering not to send your children in with nut related products.
Grapes and cherry tomatoes should be sent cut into quarters length-ways to avoid choking.

Don't forget to check our our facebook and X accounts for all the latest information from Team Wenlock!



PARENT INFORMATION

PE TIMETABLE

Year group	PE Day	PE Day
Year 3 - Alpha	Tuesday	Friday
Year 3 - Omega	Tuesday	Friday
Year 3 - Genesis	Tuesday	Friday
Year 4 - Aurora	Wednesday	Thursday
Year 4 - Alina	Wednesday	Thursday
Year 4 - Vesper	Wednesday	Thursday
Year 5 - Lunar	Wednesday	Thursday
Year 5 - Solar	Wednesday	Thursday
Year 5 - Stellar	Wednesday	Thursday
Year 6 - Aviary	Tuesday	Friday
Year 6 - Arboreal	Tuesday	Friday
Year 6 - Aquarium	Tuesday	Friday

HOMEWORK GRIDS

Year 3, 4 and 5 homework grids for Spring term are live on the website and they can be found under Home Learning section. Year 6 homework has been sent home this week. This is due back to their class teacher on Tuesday.

Spare Swimming Kits

If you have any spare swimming costumes or swimming trucks you would like to donate to the school then please drop them off in the School Office.

We would be most grateful for any donations you may have. Thank-you very much indeed.



Dinner Money

Please top up dinner money payments in advance of your child having school dinner.

The cost of school dinners is as follows:
£2.75 per day or £13.75 per week.

If you have a query relating to dinner money payment, you can contact the finance team on:

schooldinner@wenlockacademy.co.uk



Right to Choose: ASD and ADHD Assessment Pathways

What is Right to Choose?

In England, under the NHS, you now have a legal right to choose your mental healthcare provider, including for Autism Spectrum Disorder (ASD) and Attention Deficit Hyperactivity Disorder (ADHD) assessments. This service, offered through the NHS, is free of charge.

Introduction to Right to Choose Referrals

Did you know that NHS patients have the legal right to select their mental healthcare provider? This important right allows you to explore alternative providers if the waiting time for an ADHD or ASD assessment is too long. Right to Choose, introduced in 2018, is still a relatively new system, and many patients may not be aware of these options.

Who Can Offer Right to Choose Assessments?

Several clinics across the UK offer Right to Choose ADHD and/or ASD assessments. To be eligible to provide this service, clinics must also offer the same service to the NHS in England. Private-only clinics are not eligible. Checking a provider's website is a good way to determine if they offer the services you need.

For further information please go to:

[NHS Right to Choose](#)

Access to
dental
services

Oral
health
advice

Activities
for
children

FREE Dental pop-up clinic for under 10s

If your child is
in pain, please
call 111 for
advice, and do
not attend

Thursday 17 April

9am to 12.30pm and 1pm to 4.30pm

Park Town Family Hub, LU1 3DU

Free
tooth brush
& paste
for all

Fluoride
available



Luton

EASTER DISCOS



Ticket
£3.50

Featuring:

FRIDAY 28TH MARCH 2025

YEARS 3 & 4 – 3.30 PM – 4.45PM

YEARS 5 & 6: 5.00 – 6.15PM

All ticket prices include a drink and a bag of gelatin-free sweets

LEVEL TRUST
UNIFORM
EXCHANGE

LEVEL TRUST NEEDS YOU

WITH ALMOST 50% OF LUTON CHILDREN LIVING IN POVERTY, LEVEL TRUST NEEDS YOU MORE THAN EVER.

WE ARE TRYING TO RAISE £20,000 TO HELP CHILDREN LIVING IN POVERTY IN LUTON.

CURRENTLY, ALL DONATIONS ARE BEING MATCHED BY AVIVA PLC, SO FOR EVERY £1 THAT IS DONATED - AVIVA PLC WILL MATCH IT - DOUBLING THE DONATION!

THIS IS AN INCREDIBLE OPPORTUNITY TO RAISE MUCH NEEDED FUNDS FOR LEVEL TRUST BUT TIME IS RUNNING OUT!

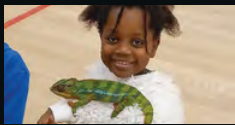
THIS OFFER ENDS ON 26TH MARCH 2025 SO WE NEED YOUR HELP NOW!

PLEASE DONATE - ALL DONATIONS WILL MAKE A DIFFERENCE.

NO MATTER HOW BIG OR SMALL.

VISIT OUR WEBSITE WWW.LEVELTRUST.ORG OR SCAN THE QR CODE





We are delighted to let you know bookings are now open!

**Free Easter Holiday Camps for children on free school meals
Monday 7th - Thursday 17th April 2025**

Book online at www.energiseluton.co.uk

or call 01582 400272 to find out more.

What's included?

**Tasty nutritious meals with friends | Enriching activities
such as arts & crafts, swimming, music, creative games
and fun activities.**



FOOD
FESTIVAL
By Aspens

DELICIOUS DESSERTS

3rd April

Chicken Fajita Fiesta
Or

Mac & Cheese Please
with a Side of Peas

And

Apple Scrapple Sponge

Jelly Jive

Brookie-O Cookie

HUMANS OF
LUTON

Don't bin them, recycle your old electricals

Anything with a plug, battery
or cable can be recycled and
turned into something new.

Bag up your electricals and
bring them to your school.
The school with the most
electricals collected will
have a chance to win a
cash prize!

Scan or search 'Recycle Your Electricals'
to find your local recycling points.



Together with

Luton



What Parents & Educators Need to Know about STREAMERS

Livestreaming has become a big part of the entertainment people consume, and what began as a series of gamers sharing their screens has grown into a huge industry packed with personalities – and potential risks for your children. With over 2.5 million people watching Twitch, the most popular streaming service, at any one time, it's important to remain aware of the risks associated with streamers.

WHAT ARE THE RISKS?

INAPPROPRIATE CONTENT



Some gaming streamers will stick to family-friendly titles, but others will play more violent games that tend to be more popular. Non-gaming streamers could, in theory, discuss just about anything, and some streamers will often stream in revealing outfits.

NEGATIVE INFLUENCES



While things have improved, streamers are often paid by companies to promote products, and this isn't always stated explicitly. While it's unlikely these goods will be harmful to your child, some streamers and influencers have engaged (knowingly or not) in scams in the past.

FINANCIAL HARM

Streamers will often have donation buttons on their screens for users to submit money. What can start as small amounts can quickly spiral as streamers engage with paying viewers more often, potentially leading to financial issues.

UNREALISTIC EXPECTATIONS



Influencers often showcase how glamorous their lives are, making some users feel as though they are lesser. However, it's important to stress that, in many ways, this is an act, or at the very least, not common. Logan Paul, who has been successful as a streamer and influencer, has a Pokemon card worth \$5 million, but this is atypical of anyone working in the medium.

MISINFORMATION



Streamers are, in many ways, just like us – and they can get things wrong or reel off an opinion without having thought about it. Some can simply say awful things to get a rise out of viewers or to sway them to their side of a hot topic.

ADDICTION AND SCREEN TIME



If your child is watching a lot of a particular streamer, it can be just as damaging to their social life as playing too many video games.

Advice for Parents & Educators

EXPLAIN HOW STREAMING WORKS



For a younger viewer, being a streamer or influencer seems aspirational, but it involves a lot of work and no small degree of good fortune. Streamers are often managed and unable to speak freely due to sponsors, and influencers are just that – influencing young minds, for better or for worse.

DO NOT LOG PAYMENT INFORMATION



Streamers can reward donations with additional content, on-camera "shout outs" and more. If you're unsure about who or what your child is watching, consider avoiding linking payment information. This is especially notable with Twitch, which is owned by Amazon and therefore has some crossover.

CHECK OUT STREAMING PLATFORMS



While Twitch was the de facto streaming service for years, YouTube has gained popularity, too. Then there are Kick and Rumble, which have grown in popularity with moves for big-name streamers – despite many being dogged by controversy.

SET SCREEN TIME LIMITS



You can set screentime limits for mobile apps on iOS and Google, but with other platforms like a PC it may be more difficult to keep tabs. Consider checking in regularly to ensure your children aren't watching content they shouldn't be.

Meet Our Expert

Lloyd Coombes is the Games Editor of the Daily Star, and has been working in the gaming and tech industry for five years. A regular visitor to the App Store to try out new tools, he's also a parent and therefore understands the importance of online safety. He's also a tech and fitness writer and has been published at sites including IGN, TechRadar, and plenty more.



#WakeUpWednesday

The National College

This term we will be focussing in school on the value JUSTICE. We hope your family will find these ideas helpful as you explore the value and have fun together.

TALK TOGETHER about Justice

Justice means more than making things 'fair'. In order for people to live together well in a just community it is important to have rules or laws that everybody sticks to. Imagine if there were no rules for people driving cars on the road!

As a family you may want to talk about:

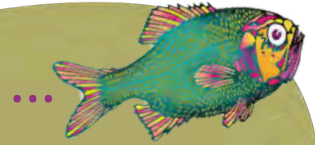
- why it is important to have rules and laws
- rules or laws that you don't think are **just** (or fair)
- family rules that you think are important

THINK TOGETHER Words of Wisdom

"Injustice anywhere is a threat to justice everywhere."
Martin Luther King Jr



READ TOGETHER The Story of Jonah



Some folk always seem to be arguing or moaning and groaning. Sometimes they moan about the weather, sometimes they moan about their family, and sometimes they just moan. In fact, they are so busy moaning about EVERYTHING that they forget to be thankful for ANYTHING.

Jonah was just like that! He moaned all the time. So when God asked him to go to Ninevah and tell the people there that he was angry about their stealing, lying, fighting and their wicked ways, of course Jonah moaned and groaned. "Not Ninevah, please! Anywhere but Ninevah! We have never got on with that nasty bunch. Please Lord, send someone else." And just in case God asked him again Jonah, quick as his legs could carry him, ran to the dock and asked the captain of the nearest boat to take him to the furthest place from Ninevah. The nearest boat was the Jolly Dragon and her captain was called Wise Captain Silas. The Jolly Dragon set sail on a calm sea under a clear blue sky but within a day found herself caught up in a fierce and frightening storm. Captain Silas knew immediately that something was not right. He went to find his passenger, who, surprise, surprise, was below deck moaning to one of the sailors. "It's my fault," groaned Jonah. "Throw me into the sea and the storm will blow over." Wise Captain Silas knew Jonah was right and so to save his ship and all the crew, gave orders to toss Jonah overboard that minute. A huge fish saw Jonah sinking slowly to the bottom of the sea, and he opened his great mouth wide, and swallowed him whole!

Jonah had only just enough time to recover from the shock when he found himself shooting through the air and onto a beach very near to Ninevah. The great fish had spat him out and swum away.

Even Jonah knew now that there was no way out. He picked himself up, shook

off the seaweed and walked slowly into the centre of the city. There he did what God had told him at the start and explained to the people of Ninevah that God was sad about their **injust** behaviour and how he wanted them to change their ways. To Jonah's amazement, that's exactly what they did.

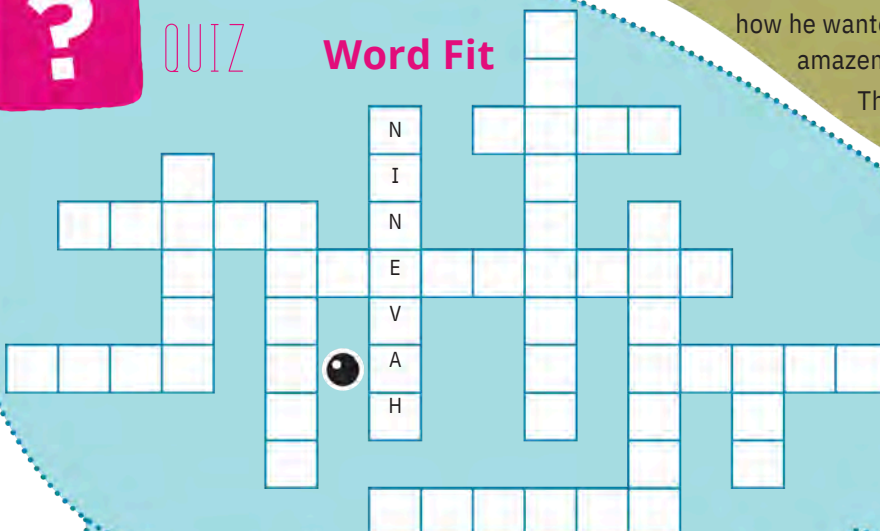
They fasted, they prayed for God's forgiveness and even thanked him for sending Jonah.

Bible story based on Book of Jonah



QUIZ

Word Fit



- ANGRY
- CALM
- FISH
- GROANED
- JONAH
- MOANER
- OVERBOARD
- PRAYED
- STORM
- SWALLOWED



Lady Justice

Lady Justice is one of the most famous landmarks in London. It is a bronze statue that stands on the domed roof of the Old Bailey. This building houses the central criminal courts where people who are accused of breaking the law are tried by a judge and jury to find out if they are 'guilty' and should be punished or 'not guilty' and can go free.



Lady Justice was designed to be a symbol of justice: in her left hand she carries the scales of truth and fairness and in her right hand a double edged sword representing the power of reason and justice.



New laws are passed every year by the government. Ask each member of the family to think of a law which they think the government should pass. Talk about your ideas and how your new law would make a difference.



FASCINATING FACTS

The World Village

If the world was a village, with 100 people living in it:

- 61 people would come from Asia, 13 from Africa, 13 from the Americas, 12 from Europe and 1 from Australasia
 - 26 of the people would be under 15 and just 8 of them over 64
 - half of the people would speak one of just 8 languages – and the most common language would be Chinese
 - 82 village people have access to safe drinking water
 - 17 people would not be able to read or write
 - 53 villagers would have less than £1.30 a day to live on
 - there would be 18 cars, 15 computers, 61 mobile phones
- Talk with your family about ...
- what you find surprising about these statistics
 - what we take for granted in our lives that many people live without
 - what you think is unjust
 - what you think could be done to make the world a more just place for everyone

* Taken from 2012 statistics inspired by © If the World Were a Village by David J. Smith, 1990.



HOME-SCHOOL CHALLENGE



Design a weighing machine

Before electronic weighing machines were invented, scales often had two pans that were balanced when each held an equal weight.

Design and make a simple balance from junk materials that can weigh small objects.

